

See discussions, stats, and author profiles for this publication at: <https://www.researchgate.net/publication/264009901>

Functional autonomic nervous system profile in children with autism spectrum disorder

Article in *Molecular Autism* · July 2014

DOI: 10.1186/2040-2392-5-39 · Source: PubMed

CITATIONS

24

READS

118

4 authors:



Azadeh Kushki

Holland Bloorview Kids Rehabilitation Hospital

64 PUBLICATIONS **1,455** CITATIONS

[SEE PROFILE](#)



Jessica A Brian

Holland Bloorview Kids Rehabilitation Hospital/ University of Toronto

127 PUBLICATIONS **6,799** CITATIONS

[SEE PROFILE](#)



Annie Dupuis

SickKids

83 PUBLICATIONS **2,527** CITATIONS

[SEE PROFILE](#)



Evdokia Anagnostou

University of Toronto

174 PUBLICATIONS **5,281** CITATIONS

[SEE PROFILE](#)

Some of the authors of this publication are also working on these related projects:



Language and Music processing in children with Autism Spectrum Disorder [View project](#)



Autism [View project](#)

RESEARCH

Open Access

Functional autonomic nervous system profile in children with autism spectrum disorder

Azadeh Kushki^{1,2*}, Jessica Brian¹, Annie Dupuis³ and Evdokia Anagnostou¹

Abstract

Background: Autonomic dysregulation has been recently reported as a feature of autism spectrum disorder (ASD). However, the nature of autonomic atypicalities in ASD remain largely unknown. The goal of this study was to characterize the cardiac autonomic profile of children with ASD across four domains affected in ASD (anxiety, attention, response inhibition, and social cognition), and suggested to be affected by autonomic dysregulation.

Methods: We compared measures of autonomic cardiac regulation in typically developing children ($n = 34$) and those with ASD ($n = 40$) as the children performed tasks eliciting anxiety, attention, response inhibition, and social cognition. Heart rate was used to quantify overall autonomic arousal, and respiratory sinus arrhythmia (RSA) was used as an index of vagal influences. Associations between atypical autonomic findings and intellectual functioning (Wechsler scale), ASD symptomatology (Social Communication Questionnaire score), and co-morbid anxiety (Revised Children's Anxiety and Depression Scale) were also investigated.

Results: The ASD group had marginally elevated basal heart rate, and showed decreased heart rate reactivity to social anxiety and increased RSA reactivity to the social cognition task. In this group, heart rate reactivity to the social anxiety task was positively correlated with IQ and task performance, and negatively correlated with generalized anxiety. RSA reactivity in the social cognition task was positively correlated with IQ.

Conclusions: Our data suggest overall autonomic hyperarousal in ASD and selective atypical reactivity to social tasks.

Keywords: Autism spectrum disorder, Autonomic nervous system, Heart rate, Respiratory sinus arrhythmia

Background

Autism spectrum disorder (ASD) is a complex neurodevelopmental disorder defined by qualitative impairments in social communication, and by the presence of repetitive behaviors and restrictive interests. An extensive body of literature suggests that ASD symptoms are associated with pervasive atypicalities in the central nervous system [1], including structures and networks involved in the regulation of the autonomic nervous system (ANS). For example, ASD has been associated with atypicalities in the amygdala [2-5], the anterior cingulate cortex [6], and the insula [7,8] - structures that play a key role in modulation of the ANS response. It is therefore not surprising

that, recently, a number of studies have reported atypicalities at the level of the peripheral nervous system, specifically pertaining to the dysregulation of the ANS [9]. These include reports of elevated basal heart rate [10-13], decreased baseline vagal tone [11-14], and blunted heart rate response to psychosocial challenges [15-17]. ANS indices have also been associated with core and co-morbid symptomatology in ASD. For example, decreased basal respiratory sinus arrhythmia (RSA) has been associated with difficulties in social behavior [14,18], decreased language abilities [18,19], internalizing symptoms [14], and cognitive delay [19].

Despite this early evidence of ANS dysregulation in ASD, wide variability in samples, methods, and measures has produced inconsistent literature findings [20]. As previously mentioned, the ANS has direct and indirect connections to a number of cortical and subcortical brain regions whose structure, function, and connectivity

*Correspondence: akushki@hollandbloorview.ca

¹Bloorview Research Institute, 150 Kilgour Road, M4G 1R8 Toronto, Canada

²The Institute of Biomaterials and Biomedical Engineering, University of Toronto, 164 College Street, M5S 3G9 Toronto, Canada

Full list of author information is available at the end of the article

are affected in ASD (for example, prefrontal, limbic, and frontal networks, the hypothalamus, and the brainstem). Moreover, ANS function is closely linked to behavior, cognition, and emotion processing [20], and indices of its function have been associated with differences in domains affected in ASD [21] such as social behavior [22], emotion regulation [23], attention [24], response inhibition [25], and adaptive functioning [26]). Given the close association between the ANS and both the central nervous system and behavioral domains, ANS atypicalities, if found, can ultimately serve as non-invasive and inexpensive markers for deficits and co-morbidities associated with ASD. The objective of this study was to address the paucity of literature in understanding ANS dysregulation in ASD by characterizing the autonomic profile of children with ASD across four domains associated with ASD and affected by ANS dysregulation (anxiety, attention, response inhibition, and social cognition). We hypothesized that individuals with ASD would show hyperarousal of the ANS. This is supported by the high prevalence of co-morbid anxiety in ASD [27], the genetic, neurobiological, and phenotypical overlap between the two disorders [28-31], and the findings of physiological hyperarousal in anxiety disorders [32-34]. We also expected atypical ANS reactivity to attention, response inhibition, and social cognition tasks in ASD based on previous reports associating ANS dysregulation with these behavioral domains [21,35-37].

Methods

Participants

We recruited a sample of typically developing (TD) children ($n = 36$) and children with ASD ($n = 47$) for the study (Figure 1). The inclusion criteria for the TD group were 8 to 18 years of age, no diagnosis of ASD or any other developmental, neurological, or psychiatric disorders, medication-free at the time of the study, and no premature birth (born after 35 weeks gestational age). The inclusion criteria for the ASD group were age 8 to 18 years, primary diagnosis of ASD, and ability to perform the study tasks. Children in the ASD group were diagnosed by an expert, research reliable team using the DSM-IV criteria supported by the Autism Diagnostic Observation Schedule (ADOS) [38] and the Autism Diagnostic Interview - Revised (ADI-R) [39].

The Bloorview Research Institute research ethics board approved the study. Participants deemed to have capacity for consent, provided written consent. For all other participants, assent and written consent were obtained from the children and their legal guardians, respectively.

Procedures

After consent, participants completed a 2-hour study in one session. During the session, they sat in front of a

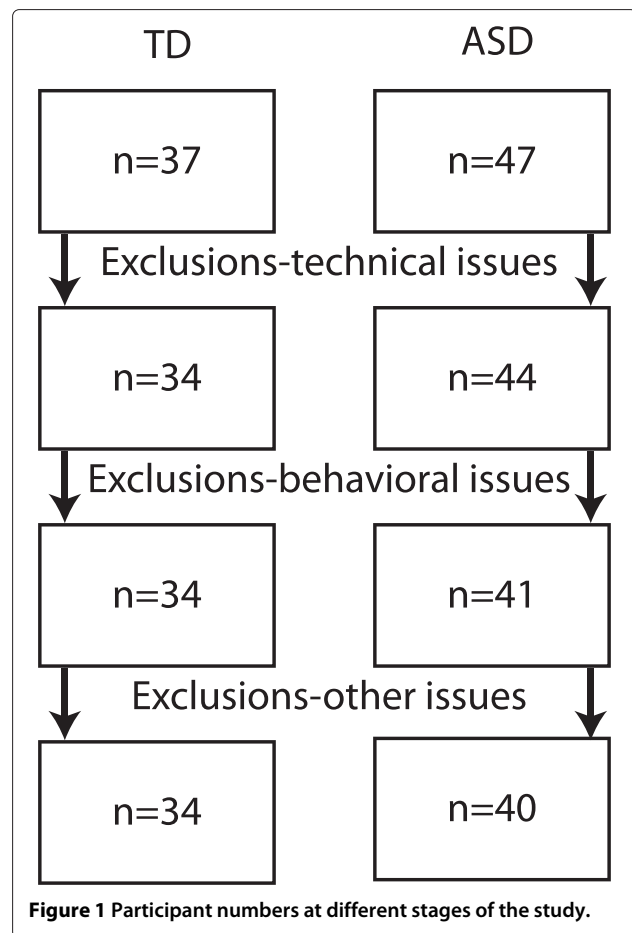


Figure 1 Participant numbers at different stages of the study.

computer screen and completed five tasks, each preceded and followed by a baseline task. The tasks were:

- Color Stroop (Color-Word Interference) test [40]. This task was used to elicit an ANS stress reaction [41,42], and shown to elicit both psychological and physiological arousal responses in typically developing populations [43] as well as children with ASD [10]. Participants completed a computerized, single-trial version of the task which involved the presentation of words corresponding to color names, printed in differently colored letters. The participants were required to name the color of the letters while ignoring the printed word. The task consisted of 5, one-minute blocks in which stimulus presentation frequency varied from 2 to 1.25 seconds/word (blocks one and five: 2 seconds/word, blocks 2 and 4: 1.5 seconds/word, block 5: 1.25 seconds/word). During the first and last blocks, only congruent stimuli were presented, whereas the remaining blocks consisted of only incongruent stimuli. Prior to starting the task, participants were provided with ten practice stimuli to ensure understanding of the task. Performance on

this task was measured as the percentage of correct responses.

- Public speaking. For this task, participants were given 2 minutes to prepare a 3-minute talk on a topic of their choice. The talk was then delivered to three strangers. Public speaking tasks have been successfully used in previous studies examining cardiac responses to anxiogenic stimuli in neurotypical individuals [44-46] and in children with ASD [15,47]. Performance on this task was measured as the percentage of the time that the participant did not speak or vocalize during the task.
- Rapid visual information processing (CANTAB, <http://www.camcog.com/>). In this test of sustained attention and working memory [48], participants were presented with random single-digit numbers (2 through 9) at a rate of 100 digits per minute and asked to identify a prespecified three-digit sequence (for example, 3-5-7) by pressing the space bar. The duration of this task was 4 minutes. Performance was measured as the percentage of correctly identified sequences.
- Stop signal task [49]. This was a test of response inhibition. Participants were presented with a series of X's and O's and asked to press the left and right buttons on a gamepad when X's and O's appeared, respectively. The stimuli were occasionally followed by an auditory tone (stop signal), requiring the participants to withhold their response. The task consisted of 5 blocks, with 24 trials per block. The first block was practice. Total length of task was approximately 10 minutes. Task performance was measured as the latency of the stop process (stop signal reaction time (SSRT)) in milliseconds [50].
- Reading the Mind in the Eyes - child version [51]. This was a test of social cognition (theory of mind) where participants were presented with a set of 28 photographs depicting the eye region of the face, and asked to choose the word that best described what the person was thinking or feeling from a set of four choices. Performance was measured as the number of correct responses.

For the baseline task, participants watched clips of animated movies. All baseline tasks were 5 minutes in duration, except for the initial baseline which was 15 minutes long to allow acclimation to the environment and sensors.

Measures

ASD symptom severity was further characterized using the Social Communication Questionnaire (SCQ). The parent version of the Revised Child Anxiety and

Depression Scale (RCADS-P) [52] was used to characterize anxiety symptomatology in this group along scales corresponding to five DSM-IV anxiety disorders (separation anxiety disorder, social phobia, generalized anxiety disorder, obsessive-compulsive disorder, and panic disorder). Given the nature of our tasks, only scales corresponding to generalized anxiety disorder and social phobia were considered in the analyses. Intellectual functioning was assessed in both groups using the Wechsler Scales of Intelligence (Wechsler Abbreviated Scale of Intelligence (I and II), and the Wechsler Intelligence Scale for Children IV). For one participant in the TD group, an existing intelligence score (the Stanford-Binet Intelligence Scale) was used.

A three-lead electrocardiogram (ECG) was measured using a wearable sensor from Shimmer Research. The ECG time series, sampled at 256 Hz, was transmitted over Bluetooth to a laptop computer and stored. Analyses were carried out offline using Matlab. Heart rate (HR) was calculated as the inverse of inter-beat (RR) intervals extracted using a modified version of the algorithms presented in the works [53,54]. In particular, the ECG signal was band-pass filtered between 5 and 15 Hz to maximize the QRS energy and to remove artifact noise, including baseline wandering, motion artifacts, and electrical noise. The signal was then differentiated, squared, and integrated using a 200-ms window. Peaks of the integrated signals were detected as R-waves using a detection threshold of 0.15 times the median of the past ten beats and a blanking period of 200 ms. The RR sequence then underwent an outlier filtering algorithm which removed RR values outside of acceptable limits. High and low limits were computed as 75% and 150% of the average of the median of all beats and the median of eight preceding beats. This combination was used to allow for adaptation to changes in median RR-interval over time. The ensuing analyses used RR values from the last 3 minutes of each task interval.

To compute RSA, each RR sequence was uniformly sampled at 8 Hz using cubic interpolation and filtered using a third-order, 21-point polynomial filter to remove the variance associated with activities at frequencies lower than spontaneous breathing [55,56]. The filtered signal was then subtracted from the original resampled sequence and the power spectral density of this residual sequence was estimated using Welch's averaged modified periodogram method (Hamming window, 800-point Fourier transform).

RSA was calculated as the natural logarithm of the total power (that is, the summation of the spectral components) in the frequency band 0.24 to 1.04 Hz, which is used in studies of vagal functioning in children [57]. The analyses were repeated using the frequency band 0.15 to 0.40 Hz [58], but the conclusions remained unchanged.

Statistical analyses

Statistical analyses were performed using SAS version 9.4 (SAS Institute, Cary, NC). To investigate group differences in HR and RSA, repeated measures multiple regression analysis was used to examine the significance of group \times task interaction using individual models for each measure. Sex, IQ, and age were included as covariates in these models. For RSA, mean baseline HR was also included as a covariate [59]. Using these models, we examined group differences in baseline HR and RSA, as well as reactivity in these measures in response to each task using contrast statements. In post hoc analyses, stepwise regression was used to examine whether baseline and reactivity cardiac measures were significantly predicted by demographic variables (age, full-scale IQ, sex), autism symptomatology (SCQ), trait anxiety (RCADS scores on the generalized anxiety disorder and social phobia subscales), and task performance. Stepwise regression combined forward selection and backward elimination with alpha-to-enter and alpha-to-remove set to 0.1.

We tested for group differences on task performance using generalized linear models, which can be used for non-normally distributed errors, adjusting for age, sex, and full-scale IQ. Outcomes were modeled for the normal, Poisson, zero-inflated Poisson, and zero-inflated negative binomial distribution as appropriate.

For all analyses, if a participant did not complete a task, the data from that task were treated as missing but the data from remaining tasks were used in the analysis.

Results

Participants

Due to technical difficulties with the data collection software, two participants in the TD group and three participants in the ASD group were excluded from the analyses. Three participants with ASD refused to comply with study protocol and were excluded. Data from an additional participant in the ASD group were excluded because of a fire alarm during the session. The demographic information for the remaining participants is shown in Table 1, and participant numbers during different stages of the study are shown in Figure 1.

Of the 40 children in the ASD group, 8 were taking medications at the time of the study. These included serotonin norepinephrine reuptake inhibitors (SNRIs) (Strattera), selective serotonin reuptake inhibitors (SSRIs) (Prozac, Zoloft, citalopram), stimulants (Ritalin, Biphentin, Concerta), and atypical antipsychotics (risperidone, Abilify). Co-morbid conditions reported by participants in the ASD group included attention deficit hyperactivity disorder (ADHD) symptoms (6), anxiety symptoms (4), developmental coordination disorder (2), history of hydrocephalus (1), dyslexia (1), and learning disability (1). One participant in the ASD group was born at 34 weeks.

Table 1 Participant characteristics

	TD (n = 34)	ASD (n = 40)	P value (group effect)
Age	12.5 \pm 2.9	12.0 \pm 2.9	0.5
Full-scale IQ	113.1 \pm 13.9	92.9 \pm 20.6	< 0.0001
Sex (male:female)*	19:15	33:7	0.02
SCQ		18.0 \pm 8.1	
RCADS-SAD		61.9 \pm 17.4	
RCADS-GAD		58.6 \pm 16.3	
RCADS-PD		57.3 \pm 17.5	
RCADS-SP		53.1 \pm 11.3	
RCADS-OCD		54.1 \pm 10.5	
RCADS-total anxiety		58.4 \pm 14.8	

*Fisher's exact test.

RCADS: Revised Child Anxiety and Depression Scale; SCQ: Social Communication Questionnaire; SAD: separation anxiety disorder; GAD: generalized anxiety disorder; PD: panic disorder; SP: social phobia; OCD: obsessive-compulsive disorder.

The RR outlier filtering algorithm retained an average of 98.6% \pm 2.2% of participant data. More than 5% of the data were removed for one participant in the TD group (10% removed) and two participants in the ASD group (9% and 13%). Exclusion of these participants did not change any of the conclusions reported in the following sections.

Task performance

Table 2 reports the performance results for both the TD and ASD groups. After controlling for age, sex, and full-scale IQ, the performance of children in the ASD group was not significantly different than that of the TD group on any of the five tasks in this study (Table 3).

HR

The mean HR for each task is shown in Figure 2 for the TD and ASD groups. For HR, repeated measures analysis revealed a significant group \times task interaction ($F(10,711) = 4.79$, $P < 0.0001$). The ASD group had significantly higher baseline (movie 1) HR (estimated group difference = 6.02 \pm 3.03 beats/minute, $t(711) = -1.99$, $P = 0.047$). The ASD group also had significantly

Table 2 Task performance for the typically developing (TD) and autism spectrum disorder (ASD) groups (mean \pm standard deviation)

	TD	ASD
Stroop task (% correct)	85.5 \pm 17.9	67.6 \pm 30.8
Public speaking (seconds silence)	37.6 \pm 40.6	65.2 \pm 51.3
RVP (% correct)	91.8 \pm 11.2	81.2 \pm 19.4
Stop task (SSRT (ms))	325.0 \pm 110	214.5 \pm 86
Reading the Mind in the Eyes (# correct)	23.4 \pm 3.1	20.1 \pm 4.6

Table 3 Comparison of performance between groups after controlling for IQ, age, sex (mean ± standard error)

	TD	ASD	P value (group effect)
Stroop task (% correct)	85.3 ± 2.1	80.8 ± 2.6	0.18
Public speaking (log(seconds silence))	3.2 ± 0.2	3.6 ± 0.2	0.21
RVP (% correct)	85.1 ± 2.4	84.5 ± 2.5	0.87
Stop task (SSRT (ms))	339.0 ± 18.1	306.8 ± 19.0	0.25
Reading the Mind in the Eyes (# correct)	18.8 ± 0.5	18.6 ± 0.5	0.73

decreased HR reactivity during the public speaking task (estimated group difference (speaking - pre baseline) = 6.28 ± 1.31 beats/minute, $t(711) = 4.79$, $P < 0.0001$; estimated group difference (speaking - post baseline) = 6.38 ± 1.31 beats/minute, $t(711) = 4.87$, $P < 0.0001$). Exclusion of the ASD participants on medications increased the P value for the baseline group difference (estimated group difference = -5.88 ± 3.19 beats/minute, $t(632) = -1.85$, $P = 0.066$). No significant group differences were found for HR reactivity in the Stroop, rapid visual information processing, stop signal, or Reading the Mind in the Eyes tasks.

RSA

The mean RSA for each task is shown in Figure 3 for the TD and ASD groups. Repeated measures analysis did not show a significant group × task interaction on RSA, and there was no significant difference in baseline RSA

between the groups. However, in response to the Reading the Mind in the Eyes task, there was a marginally larger decrease in RSA in the ASD group (estimated group difference (Eyes - pre baseline) = $0.21 \pm 0.11 \log(\text{ms}^2)$, $t(708) = 1.8$, $P = 0.07$) and a larger RSA increase during recovery from the Reading the Mind in the Eyes task (estimated group difference (Eyes - post baseline) = 0.24 ± 0.12 beats/minute, $t(708) = 1.9$, $P = 0.06$). Exclusion of the medication group decreased the P value (estimated group difference (Eyes - pre- baseline) = $0.22 \pm 0.12 \log(\text{ms}^2)$, $t(629) = 2.15$, $P = 0.03$; estimated group difference (Eyes - post baseline) = 0.25 ± 0.13 beats/minute, $t(629) = 1.88$, $P = 0.06$). This also revealed a marginally significant group difference in recovery from the stop signal task (estimated group difference (stop task - post baseline) = $0.25 \pm 0.13 \log(\text{ms}^2)$, $t(629) = 1.94$, $P = 0.05$), and in change and recovery from the RVP task (estimated group difference = $0.2 \pm 0.11 \log(\text{ms}^2)$, $t(629) = 1.74$, $P = 0.08$). No significant group differences were found for RSA reactivity in the Stroop, public speaking, or rapid visual information processing tasks.

Association with demographic, anxiety, and performance measures

Table 4 summarizes the results of the post hoc correlation analysis examining associations between HR and RSA, and demographic, anxiety, and performance measures in the ASD group. The analyses were conducted for measures/task pairs for which significant group differences were revealed by the repeated measures analyses in the previous sections. After removing the medication group, stepwise regression revealed that the only significant

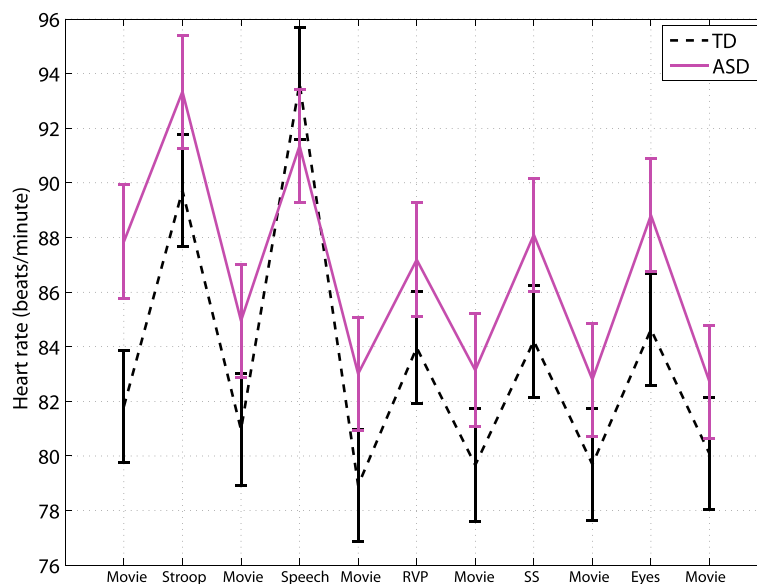


Figure 2 HR: Mean across tasks for the TD and ASD groups. Error bars represent standard error.

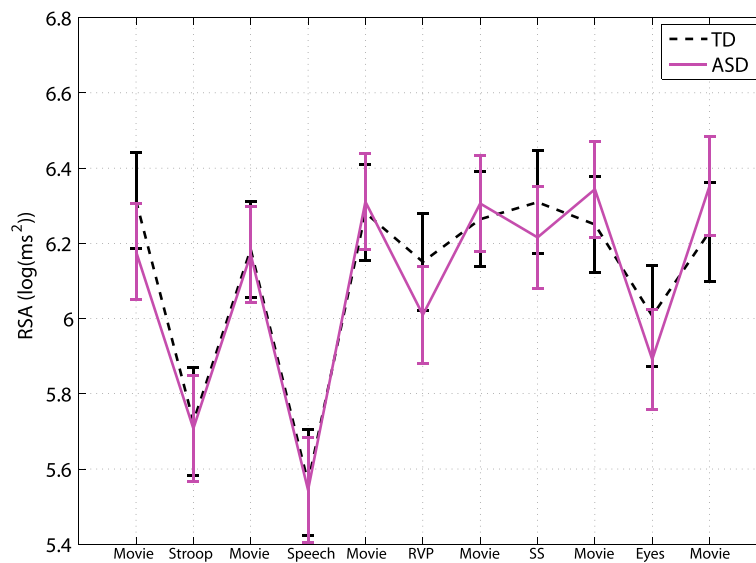


Figure 3 RSA: Mean across tasks for the TD and ASD groups. Error bars represent standard error.

predictor of baseline HR was age (model R-square = 0.14). HR change (speaking - pre baseline) was predicted by full-scale IQ and RCADS generalized anxiety score (model R-square = 0.36; partial R-squares: full-scale IQ = 0.20, generalized anxiety = 0.17). HR recovery during public speaking (speaking - post baseline) was predicted by full-scale IQ, RCADS generalized anxiety score, and performance on the task (model R-square = 0.46; partial R-squares: full-scale IQ = 0.15, generalized anxiety = 0.18, performance = 0.12).

The only significant predictor of RSA change during the Reading the Mind in the Eyes task was full-scale IQ (Eyes - pre baseline model R-square = 0.29; Eyes - post baseline model R-square = 0.20).

Discussion

Our results suggest atypical cardiac findings in the ASD group despite group differences on task performance. These findings include cardiac hyperarousal in the ASD group as well as atypical responses to the public speaking and Reading the Mind in the Eyes tasks. In particular,

while not statistically significant, we found that the ASD group had an elevated heart rate during the experimental session. Moreover, this group showed a blunted heart rate response to public speaking which was correlated with full-scale IQ and generalized anxiety score, and an exaggerated RSA response to the Reading the Mind in the Eyes task which was correlated with full-scale IQ.

Our data also showed that medication effects accounted for a marginal difference in the outcomes. This suggests that future studies on ANS functioning should report on the use of medications in their samples and account for their potential effects on ANS measures.

Task performance

We did not find any group differences in task performance after adjusting for age, sex, and full-scale IQ. In the absence of such differences, ANS atypicalities may suggest compensatory mechanisms applied by the ASD group.

Reflecting the heterogeneity in the autism spectrum, there is considerable variability in the literature regarding performance on the tasks used in this study. For example,

Table 4 Associations between cardiac variables and demographic, anxiety, and performance measures for the ASD group

	Age	IQ	RCADS GAD	Performance
Baseline HR	-1.57 ± 0.70*			
HR speaking-pre baseline		0.18 ± 0.05**	-0.15 ± 0.06*	
HR speaking-post baseline		0.19 ± 0.06**	-0.18 ± 0.06*	0.08 ± 0.04*
RSA Eyes-pre baseline		-0.02 ± 0.005**		
RSA Eyes-post baseline		-0.01 ± 0.005*		

Only significant regression slopes (β) are reported. *P < 0.05, **P < 0.005. HR: heart rate; RSA: respiratory sinus arrhythmia; speaking: public speaking task; Eyes: Reading the Mind in the Eyes task; RCADS: Revised Child Anxiety and Depression Scale; GAD: generalized anxiety disorder.

regarding the Stroop and stop signal tasks, several studies have reported no performance differences whereas others have reported significant group effects (see [60] for a review). With regard to public speaking, no group differences were found in the length of the public speech between ASD and TD participants (although physiological differences were found) [15]. With regard to the Reading the Mind in the Eyes Task, our results are adjusted for IQ, age, and sex. Our unadjusted means for the TD and ASD groups are well in line with the literature which has reported significant group differences [61]. Our analysis of task performance differences may be limited by the fact that the ASD and TD were not matched on IQ, as this may have reduced the statistical power to detect significant group differences. Future studies with larger sample sizes are needed to further investigate these differences.

Baseline differences

Previous literature on cardiac measures of ANS have reported either hyperarousal [10-13,62] or no baseline atypicalities in ASD [47]. Consistent with the hyperarousal hypothesis, our data indicate that children with ASD had marginally significantly elevated HR at baseline compared to the typically developing children. These results replicate our own findings of basal hyperarousal in [10]. This hyperarousal trend persisted through the four domains examined in this study, although the difference did not reach statistical significance. This hyperarousal may be associated with co-morbid anxiety in ASD, a feature of ASD itself, or a manifestation of the interaction of ASD and anxiety symptoms.

- **Co-morbid anxiety in ASD:** Anxiety disorders are one of the most prevalent co-morbidities in ASD [27] and may exacerbate or occasionally drive the core deficits of ASD [30]. While the nature of anxiety in ASD is still largely unknown [63], ASD has been associated with genetic [28,29], neurobiological, and phenotypical overlap with anxiety disorders [30,31]. From a neurobiological perspective, both ASD and anxiety disorders have been associated with differences in central structures involved in emotional processing (such as the amygdala, anterior cingulate cortex, prefrontal cortex, and the insular cortex) [64,65]. In terms of phenotypic presentation, ASD and anxiety are thought to present with overlapping symptoms related to repetitive and restrictive interests (for example, perseverative behavior), social and emotional reciprocity, avoidance behaviors, and speech difficulties [31,63,66]. Interestingly, subclinical ASD traits have been reported in children with anxiety disorders [31]. The clinical presentation of anxiety is conceptualized as having three interconnected dimensions:

behavioral (such as crying, avoidance, or tantrums), subjective-cognitive (such as maladaptive or negative thoughts), and physiological (such as increased heart rate or perspiration) [67,68]. The latter often manifests itself as a “fight or flight” response which is associated with excitation and inhibition of the sympathetic and parasympathetic branches of the ANS, respectively. Highlighting the role of the physiological dimension, chronically elevated HR has been reported in anxiety disorders [32-34]. A similar pattern was found in the present study, suggesting physiological symptom overlap between ASD and anxiety disorders. As such, the hyperarousal found herein may reflect the cardiac signs of co-morbid anxiety.

In this study, we did not find a significant correlation between baseline HR and trait anxiety measured by the RCADS. Previous literature findings on this association are mixed [45].

- **Hyperarousal as a feature of ASD:** ANS hyperarousal may also be related to neurobiological differences associated with ASD. Although the ANS response is modulated both at the central and peripheral levels, in the absence of any evidence indicating primary ANS dysfunction in ASD, we suggest that hyperarousal of the ANS system may be secondary to hyperarousal at the central level. At this level, hyperarousal may be associated with over-responsivity of networks involved in perception, processing, and responding to emotional stimuli [34]. Processes that may contribute to this over-responsivity include increased threat perception, increased and misinterpreted perception of bodily sensations [34], or decreased inhibition of the fear response. ASD has been associated with neurobiological differences in brain networks responsible for these functions (for example, the prefrontal cortex, the insular cortex, and the anterior cingulate cortices) [6], and aspects of these differences have been associated with anxiety symptom severity [69,70]. For example, total and right amygdala volumes have been positively associated with scores on the anxiety subscale of the Child Behavior Checklist [69] in a sample of children with ASD. At the same time, ASD has been associated with enlargement of the amygdala [2-4]. While these findings further support the role of the central nervous system in ANS hyperarousal, neuroimaging studies are needed to examine this hypothesis.
- **Interaction of ASD and anxiety features:** The observed hyperarousal in our sample may also be related to an interaction between anxiety and ASD features. For example, ASD features such as sensory sensitivities, insistence on sameness, or other

affective and cognitive deficits may lead to increased stressors experienced by this population, which can ultimately lead to increased arousal [63,71].

Moreover, neurological dysregulation (for example, in threat perception or in interoception) may further increase the susceptibility to conditioning by negative experiences and hyperarousal.

We did not find evidence of reduced parasympathetic tone as measured by RSA. Literature findings on this issue are divergent, with a number of studies reporting significantly reduced RSA [11-14], and others finding no atypicalities [47,62]. This discrepancy may be related to methodological differences, age-related changes (for example, developmental trend), and other confounding variables (anxiety, attention, level of intervention received). For example, our study was different than [11,12,14] in the baseline task used (such as movie watching versus sitting quietly), suggesting that task conditions may play a role in measurement of baseline ANS arousal. Future well-controlled studies are needed to further investigate these issues.

Differences in task reactivity

Our data showed a blunted HR response to the social anxiety task in the ASD group. This pattern has been reported consistently in three studies examining ANS reactivity to psychosocial challenges [15-17], and was previously suggested to be a manifestation of response saturation due to basal hyperarousal. Consistent with this hypothesis, we found a significant negative association between HR change and scores on the generalized anxiety subscale of the RCADS. This atypical response, however, has not been previously reported in ANS studies of public speaking involving social phobics, and may therefore be unique to ASD. Interestingly, the blunted response was not seen in our second anxiety task (Stroop Color-Interference task). Given that impairments in social interaction are a defining feature of ASD, we hypothesize that the atypical response found in this study may reflect differences in subjective experiences of the task (such as motivation, attention, or judgement of the social threat). This hypothesis is consistent with our finding of a positive correlation between HR change, and IQ and task performance [63,72].

Our data also revealed increased RSA reactivity to the Reading the Mind in the Eyes task in the ASD group. This task is a test of theory of mind (ToM) or the ability to recognize others' emotions and states of mind. A domain affected in ASD, ToM allows for fostering of appropriate social behaviors, establishment of reciprocal relationships, and development of social competence [12]. Social function, and ToM in particular, have also been linked to RSA regulation, as the "vagal brake" promotes

calm behavioral states that are needed for social function, with greater ability to reduce RSA associated with better outcomes [21]. While we did not find an association between severity of social communication symptomatology as measured by the SCQ, our data did show that IQ was a significant predictor of RSA change in the ASD group. In the absence of performance differences between the groups, large RSA variability may reflect higher degree of effort or compensatory mechanisms applied by the ASD group. The latter is consistent with atypical central nervous system responses to the Eyes task (for example, decreased amygdala activation) [73].

Limitations

Our data suggest basal hyperarousal in the ASD group. However, our baseline condition (movie watching) may not reflect a true "rest" state, and the pattern of hyperarousal at baseline may reflect increased ANS lability to laboratory conditions. Considering that we did not find HR over-reactivity to our experimental tasks, this scenario is unlikely.

Our sample size may have limited our ability to detect significant group differences in reactivity to attention and response inhibition tasks. Moreover, this sample hindered the analysis of subgroups that may exhibit different physiological responses (hyperarousal versus hypoarousal). Additionally, while our typically developing group was screened based on medical history, we were unable to report on the presence of any undiagnosed ASD traits in this population (for example, by using the SCQ).

Finally, the ANS has complex and bidirectional interactions with the central nervous system and the endocrine system. As such, our measures of cardiac autonomic control reflect the final common pathway of these interactions.

Conclusions

Recently, it has been suggested that ASD may be associated with autonomic dysregulation. Our data are consistent with this hypothesis. In particular, we found basal heart rate hyperarousal and atypical heart rate and respiratory sinus arrhythmia reactivity to two social tasks (public speaking and Reading the Mind in the Eyes). Future studies are needed to examine the central nervous system correlates of this dysregulation, as well as its association with co-morbid anxiety and ASD symptomatology. The finding of ANS dysregulation may ultimately suggest new treatment targets in ASD, and lead to inexpensive and non-invasive markers for deficits associated with this disorder.

Abbreviations

ASD: Autism spectrum disorder; ANS: Autonomic nervous system; ECG: Electrocardiogram; HR: Heart rate; RCADS: Revised Child Anxiety and Depression Scale; RSA: Respiratory sinus arrhythmia; SCQ: Social

Communication Questionnaire; SSRT: Stop signal reaction time; TD: Typically developing; ToM: Theory of mind.

Competing interests

AK, JB, and AD declare that they have no competing interests. EA has received consultation fees from Novartis and Seaside Therapeutics and an unrestricted grant by Sanofi Canada.

Authors' contributions

AK conceptualized and designed the study, carried out the analyses, and drafted the manuscript. JB contributed to conceptualization and design of the study and interpretation of the results, supervised all psychological assessments, and edited the manuscript. AD contributed to the statistical analysis and edited the manuscript. EA contributed to conceptualization and design of the study, interpretation of the results, and drafting of the manuscript. All authors read and approved the manuscript.

Acknowledgements

This research was conducted with the support of the Ontario Brain Institute, an independent non-profit corporation, funded partially by the Ontario government. The opinions, results, and conclusions are those of the authors, and no endorsement by the Ontario Brain Institute is intended or should be inferred. We would like to thank Krissy Doyle-Thomas, Seth Sobel, Danielle D'Alessandro, Tom Nantis, Susan Day Fragiadakis, Naomi Sklar, and Johnny Au for their contributions to the study.

Author details

¹Bloorview Research Institute, 150 Kilgour Road, M4G 1R8 Toronto, Canada. ²The Institute of Biomaterials and Biomedical Engineering, University of Toronto, 164 College Street, M5S 3G9 Toronto, Canada. ³The Hospital for Sick Children, 555 University Avenue, M5G 1X8 Toronto, Canada.

Received: 25 March 2014 Accepted: 18 June 2014

Published: 4 July 2014

References

- Parellada M, Penzol M, Pina L, Moreno C, González-Vioque E, Zalsman G, Arango C: **The neurobiology of autism spectrum disorders.** *Eur Phys* 2014, **29**(1):11–19.
- Schumann CM, Hamstra J, Goodlin-Jones BL, Lotspeich LJ, Kwon H, Buonocore MH, Lammers CR, Reiss AL, Amaral DG: **The amygdala is enlarged in children but not adolescents with autism; the hippocampus is enlarged at all ages.** *J Neurosci* 2004, **24**(28):6392–6401.
- Schumann CM, Barnes CC, Lord C, Courchesne E: **Amygdala enlargement in toddlers with autism related to severity of social and communication impairments.** *Biol Psychiatry* 2009, **66**(10):942–949.
- Murphy CM, Deeley Q, Daly E, Ecker C, O'Brien F, Hallahan B, Loth E, Toal F, Reed S, Hales S, Robertson DM, Craig MC, Mullins D, Barker GJ, Lavender T, Johnston P, Murphy KC, Murphy DG: **Anatomy and aging of the amygdala and hippocampus in autism spectrum disorder: an in vivo magnetic resonance imaging study of Asperger syndrome.** *Autism Res* 2012, **5**(1):3–12.
- Nordahl CW, Scholz R, Yang X, Buonocore MH, Simon T, Rogers S, Amaral DG: **Increased rate of amygdala growth in children aged 2 to 4 years with autism spectrum disorders: a longitudinal study.** *Arch Gen Psychiatry* 2012, **69**(1):53–61.
- Anagnostou E, Taylor MJ: **Review of neuroimaging in autism spectrum disorders: what have we learned and where we go from here.** *Mol Autism* 2011, **2**(4).
- Uddin LQ, Menon V: **The anterior insula in autism: under-connected and under-examined.** *Neurosci Biobehav Rev* 2009, **33**(8):1198–1203.
- Ebisch SJ, Gallese V, Willems RM, Mantini D, Groen WB, Romani GL, Buitelaar JK, Bekkering H: **Altered intrinsic functional connectivity of anterior and posterior insula regions in high-functioning participants with autism spectrum disorder.** *Human Brain Mapp* 2011, **32**(7):1013–1028.
- Cheshire WP: **Highlights in clinical autonomic neuroscience: new insights into autonomic dysfunction in autism.** *Auton Neurosci* 2012, **171**(1):4–7.
- Kushki A, Drumm E, Mobarak MP, Tanel N, Dupuis A, Chau T, Anagnostou E: **Investigating the autonomic nervous system response to anxiety in children with autism spectrum disorders.** *PLoS one* 2013, **8**(4):59730.
- Ming X, Julu POO, Brimacombe M, Connor S, Daniels ML: **Reduced cardiac parasympathetic activity in children with autism.** *Brain Dev* 2005, **27**(7):509–516.
- Bal E, Harden E, Lamb D, Van Hecke AV, Denver JW, Porges SW: **Emotion recognition in children with autism spectrum disorders Relations to eye gaze and autonomic state.** *J Autism Dev Disord* 2010, **40**(3):358–370.
- Porges SW, Macellario M, Stanfill SD, McCue K, Lewis GF, Harden ER, Handelman M, Denver J, Bazhenova OV, Heilman KJ: **Respiratory sinus arrhythmia and auditory processing in autism modifiable deficits of an integrated social engagement system?** *Int J Psychophysiol* 2013, **88**(3):261–270.
- Neuhaus E, Bernier R, Beauchaine TP: **Brief report: social skills, internalizing and externalizing symptoms, and respiratory sinus arrhythmia in autism.** *J Autism Dev Disord* 2014, **44**(3):730–737.
- Jansen L, Gispens-De Wied CC, Van Der Gaag RJ, Van Engeland H: **Differentiation between autism and multiple complex developmental disorder in response to psychosocial stress.** *Neuropsychopharmacology* 2003, **28**(3):582–590.
- Jansen LMC, Gispens-de Wied CC, Wiegant VM, Westenberg HGM, Lahuis BE, van Engeland H: **Autonomic and neuroendocrine responses to a psychosocial stressor in adults with autistic spectrum disorder.** *J Autism Dev Disord* 2006, **36**(7):891–899.
- Smeekens I, Didden R, Verhoeven E: **Exploring the relationship of autonomic and endocrine activity with social functioning in adults with autism spectrum disorders.** *J Autism Dev Disord* 2013:1–11.
- Patriquin MA, Scarpa A, Friedman BH, Porges SW: **Respiratory sinus arrhythmia: a marker for positive social functioning and receptive language skills in children with autism spectrum disorders.** *Dev Psychobiol* 2013, **55**(2):101–112.
- Patriquin MA, Lorenzi J, Scarpa A: **Relationship between respiratory sinus arrhythmia, heart period, and caregiver-reported language and cognitive delays in children with autism spectrum disorders.** *Appl Psychophysiol Biofeedback* 2013, **38**(3):203–207.
- Benevides TW, Lane SJ: **A review of cardiac autonomic measures: considerations for examination of physiological response in children with autism spectrum disorder.** *J Autism Dev Disord* 2013:1–16.
- Porges SW: *The Polyvagal Theory: Neurophysiological Foundations of Emotions, Attachment, Communication, and Self-regulation.* New York, London: WW Norton & Company; 2011.
- Mezzacappa E, Tremblay RE, Kindlon D, Saul JP, Arseneault L, Seguin J, Pihl RO, Earls F: **Anxiety, antisocial behavior, and heart rate regulation in adolescent males.** *J Child Psychol Psychiatry* 1997, **38**(4):457–469.
- Appelhans BM, Luecken LJ: **Heart rate variability as an index of regulated emotional responding.** *Re Gen Psychol* 2006, **10**(3):229–240.
- Porges SW: **Autonomic regulation and attention.** In *Attention and Information Processing in Infants and Adults.* Edited by Campbell B, Hayne H, Richardson R. New Jersey: Lawrence Erlbaum Associates, Inc; 1992:201–223.
- Jennings JR, van der Molen MW, Pelham W, Debski KB, Hoza B: **Inhibition in boys with attention deficit hyperactivity disorder as indexed by heart rate change.** *Dev Psychol* 1997, **33**(2):308–318.
- Graziano P, Derefinko K: **Cardiac vagal control and children's adaptive functioning: a meta-analysis.** *Biol Psychol* 2013, **94**(1):22–37.
- van Steensel FJ, Bögels SM, Perrin S: **Anxiety disorders in children and adolescents with autistic spectrum disorders: a meta-analysis.** *Clin Child Fam Psychol Rev* 2011, **14**(3):302–317.
- Weiss LA: **Autism genetics: emerging data from genome-wide copy-number and single nucleotide polymorphism scans.** *Expert Rev Mol Diagn* 2009, **9**(8):795–803.
- Miller DT, Shen Y, Weiss LA, Korn J, Anselm I, Bridgemohan C, Cox GF, Dickinson H, Gentile J, Harris DJ, Hegde V, Hundley R, Khwaja O, Kothare S, Luedke C, Nasir R, Poduri A, Prasad K, Raffalli P, Reinhard A, Smith SE, Sobehi MM, Soul JS, Stoler J, Takeoka M, Tan W-H, Thakuria J, Wolff R, Yusupov R, Gusella JF, et al: **Microdeletion/duplication at 15q13.2q13.3 among individuals with features of autism and other neuropsychiatric disorders.** *J Med Genet* 2009, **46**(4):242–248.
- Cath DC, Ran N, Smit JH, van Balkom AJ, Comijs HC: **Symptom overlap between autism spectrum disorder, generalized social anxiety**

- disorder and obsessive-compulsive disorder in adults: a preliminary case-controlled study. *Psychopathology* 2008, **41**(2):101–110.
31. van Steensel FJ, Bögels SM, Wood JJ: **Autism spectrum traits in children with anxiety disorders.** *J Autism Dev Disord* 2013, **43**(2):361–370.
 32. Thayer JF, Friedman BH, Borkovec TD: **Autonomic characteristics of generalized anxiety disorder and worry.** *Biol Psychiatry* 1996, **39**(4):255–266.
 33. Kawachi I, Sparrow D, Vokonas PS, Weiss ST: **Decreased heart rate variability in men with phobic anxiety (data from the normative aging study).** *Am J Cardiol* 1995, **75**(14):882–885.
 34. Friedman BH, Thayer JF: **Autonomic balance revisited: panic anxiety and heart rate variability.** *J Psychosom Res* 1998, **44**(1):133–151.
 35. Börger N, van Der Meere J, Ronner A, Alberts E, Geuze R, Bogte H: **Heart rate variability and sustained attention in ADHD children.** *J Abnorm Child Psychol* 1999, **27**(1):25–33.
 36. Crowell SE, Beauchaine TP, Gatzke-Kopp L, Sylvers P, Mead H, Chipman-Chacon J: **Autonomic correlates of attention-deficit/hyperactivity disorder and oppositional defiant disorder in preschool children.** *J Abnorm Psychol* 2006, **115**(1):174–178.
 37. Beauchaine TP, Katkin ES, Strassberg Z, Snarr J: **Disinhibitory psychopathology in male adolescents: discriminating conduct disorder from attention-deficit/hyperactivity disorder through concurrent assessment of multiple autonomic states.** *J Abnorm Psychol* 2001, **110**(4):610–624.
 38. Lord C, Risi S, Lambrecht L, Cook E. H, Leventhal BL, DiLavore PC, Pickles A, Rutter M: **The autism diagnostic observation schedule-generic: a standard measure of social and communication deficits associated with the spectrum of autism.** *J Autism Dev Disord* 2000, **30**(3):205–223.
 39. Lord C, Rutter M, Le Couteur A: **Autism diagnostic interview-revised: a revised version of a diagnostic interview for caregivers of individuals with possible pervasive developmental disorders.** *J Autism Dev Disord* 1994, **24**(5):659–685.
 40. Stroop JR: **Studies of interference in serial verbal reactions.** *J Exp Psychol* 1935, **18**(6):643–662.
 41. Fechir M, Gamer M, Blasius I, Bauermann T, Breimhorst M, Schindwein P, Schlereth T, Birklein F: **Functional imaging of sympathetic activation during mental stress.** *Neuroimage* 2010, **50**(2):847–854.
 42. Boutcher YN, Boutcher SH: **Cardiovascular response to stroop: effect of verbal response and task difficulty.** *Biol Psychol* 2006, **73**(3):235–241.
 43. Tulen J, Moleman P, Van Steenis H, Boomsma F: **Characterization of stress reactions to the Stroop Color Word Test.** *Pharmacol Biochem Behav* 1989, **32**(1):9–15.
 44. Behnke RR, Carlile LW: **Special reports: heart rate as an index of speech anxiety.** *Speech Monographs* 1971, **38**(1):65–69.
 45. Beatty MJ, Behnke RR: **Effects of public speaking trait anxiety and intensity of speaking task on heart rate during performance.** *Hum Commun Res* 1991, **18**(2):147–176.
 46. Pörhölä M: **Arousal styles during public speaking.** *Commun Educ* 2002, **51**(4):420–438.
 47. Levine T, Sheinkopf S, Pescosolido M, Rodino A, Elia G, Lester B: **Physiologic arousal to social stress in children with autism spectrum disorders: a pilot study.** *Res Autism Spectr Disord* 2012, **6**(1):177–183.
 48. Coull J, Frith C, Frackowiak RSJ, Grasby P: **A fronto-parietal network for rapid visual information processing: a pet study of sustained attention and working memory.** *Neuropsychologia* 1996, **34**(11):1085–1095.
 49. McAuley T, Crosbie J, Charach A, Schachar R: **The persistence of cognitive deficits in remitted and unremitted ADHD: a case for the state-independence of response inhibition.** *J Child Psychol Psychiatry* 2014, **55**(3):292–300.
 50. Verbruggen F, Logan GD: **Models of response inhibition in the stop-signal and stop-change paradigms.** *Neurosci Biobehav Rev* 2009, **33**(5):647–661.
 51. Baron-Cohen S, Wheelwright S, Hill J, Raste Y, Plumb I: **The reading the mind in the eyes test revised version: a study with normal adults, and adults with Asperger syndrome or high-functioning autism.** *J Child Psychol Psychiatry* 2001, **42**(2):241–251.
 52. Ebesutani C, Bernstein A, Nakamura BJ, Chorpita BF, Weisz JR: **A psychometric analysis of the revised child anxiety and depression scale-parent version in a clinical sample.** *J Abnorm Child Psychol* 2010, **38**(2):249–260.
 53. Pan J, Tompkins WJ: **A real-time QRS detection algorithm.** *Biomed Eng IEEE Trans* 1985, **32**(3):230–236.
 54. Hamilton PS, Tompkins WJ: **Quantitative investigation of QRS detection rules using the MIT/BIH arrhythmia database.** *Biomed Eng IEEE Trans* 1986, **33**(12):1157–1165.
 55. Porges SW: **Method and apparatus for evaluating rhythmic oscillations in aperiodic physiological response systems.** *Google Patents* 1985. US Patent 4,510,944A.
 56. Lewis GF, Furman SA, McCool MF, Porges SW: **Statistical strategies to quantify respiratory sinus arrhythmia: are commonly used metrics equivalent?** *Biol Psychol* 2012, **89**(2):349–364.
 57. Suess PE, Porges SW, Plude DJ: **Cardiac vagal tone and sustained attention in school-age children.** *Psychophysiology* 1994, **31**(1):17–22.
 58. Task Force of the European Society of Cardiology the North American Society of Pacing Electrophysiology: **Heart rate variability: standards of measurement, physiological interpretation and clinical use.** *Circulation* 1996, **93**(5):1043–1065.
 59. Billman GE: **The effect of heart rate on the heart rate variability response to autonomic interventions.** *Front Physiol* 2013, **4**(222):1–9.
 60. Adams NC, Jarrold C: **Inhibition and the validity of the Stroop task for children with autism.** *J Autism Dev Disord* 2009, **39**(8):1112–1121.
 61. Kaland N, Callesen K, Møller-Nielsen A, Mortensen EL, Smith L: **Performance of children and adolescents with Asperger syndrome or high-functioning autism on advanced theory of mind tasks.** *J Autism Dev Disord* 2008, **38**(6):1112–1123.
 62. Watson LR, Roberts JE, Baranek GT, Mandulak KC, Dalton JC: **Behavioral and physiological responses to child-directed speech of children with autism spectrum disorders or typical development.** *J Autism Dev Disord* 2012, **42**(8):1616–1629.
 63. Kerns CM, Kendall P. C: **The presentation and classification of anxiety in autism spectrum disorder.** *Clin Psychol: Sci Pract* 2012, **19**(4):323–347.
 64. Mathew SJ, Price RB, Charney DS: **Recent advances in the neurobiology of anxiety disorders: implications for novel therapeutics.** *Am J Med Genet C: Seminars in Medical Genetics* 2008, **148C**(2):89–98.
 65. Shin LM, Liberzon I: **The neurocircuitry of fear, stress, and anxiety disorders.** *Neuropsychopharmacology* 2010, **35**(1):169–191.
 66. Tyson KE, Cruess DG: **Differentiating high-functioning autism and social phobia.** *J Autism Dev Disord* 2012, **42**(7):1477–1490.
 67. Lang PJ: **Fear reduction and fear behavior: problems in treating a construct.** In *Third Conference on Research in Psychotherapy, 3rd, May-Jun, 1966.* Chicago: American Psychological Association; 1968:90–102.
 68. Beidel DC, Alfano CA: *Child Anxiety Disorders: A Guide to Research and Treatment.* New York: Taylor & Francis; 2013.
 69. Juranek J, Filipek PA, Berenji GR, Modahl C, Osann K, Spence M. A: **Association between amygdala volume and anxiety level: magnetic resonance imaging (MRI) study in autistic children.** *J Child Neurol* 2006, **21**(12):1051–1058.
 70. Kleinhans NM, Richards T, Weaver K, Johnson LC, Greenson J, Dawson G, Aylward E: **Association between amygdala response to emotional faces and social anxiety in autism spectrum disorders.** *Neuropsychologia* 2010, **48**(12):3665–3670.
 71. Bellini S: **The development of social anxiety in adolescents with autism spectrum disorders.** *Focus Autism Dev Disabil* 2006, **21**(3):138–145.
 72. Russell E, Sofronoff K, Russell E, Sofronoff K: **Anxiety and social worries in children with Asperger syndrome.** *Aust N Z J Psychiatry* 2005, **39**(7):633–638.
 73. Baron-Cohen S, Ring HA, Wheelwright S, Bullmore ET, Brammer MJ, Simmons A, Williams SC: **Social intelligence in the normal and autistic brain: an fMRI study.** *Eur J Neurosci* 1999, **11**(6):1891–1898.

doi:10.1186/2040-2392-5-39

Cite this article as: Kushki et al.: Functional autonomic nervous system profile in children with autism spectrum disorder. *Molecular Autism* 2014 **5**:39.